

NIMBUSfire



HIGH IMPACT
 HIGH EFFICIENCY
 LOW COST
 SAFER
 FIRE FIGHTING

* HIGH RISE * OFF ROAD * MARINE * AIRCRAFT * CONTAINER * GRASSLAND
 * VEHICLE * THATCH * HAZMAT * CAR PARKS ...no limits

“The patent pending Nimbus System, created in April 2010, is an extremely versatile, revolutionary fire fighting tactic. It can deal with most fire incidents more effectively than existing systems. Using very little water and relying on the scientifically proven misting technique, there is minimal or no water damage and no dirty water run off. Most significantly, it will save fire fighters' lives by eliminating backdraft and flashover”.

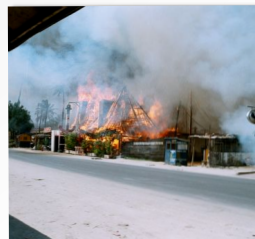
Richard Baker



CAR AND BOAT



PEAT AND
 DEEP SEATED



THATCH



WILDLAND

GOOD SCIENCE HAS NEVER BEEN SO BAD FOR FIRE!

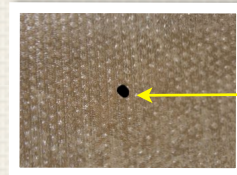
NIMBUS CAN DEAL WITH ANY FIRE



COMPARTMENT

The NIMBUS cutting lance rapidly penetrates most materials injecting a fine spray into the fire compartment.

- Temperatures drop dramatically
- Back draught risk is removed
- Safety of personnel and the survivability of casualties is greatly improved



2mm entry hole in concrete slab



HIGH RISE

With a 90 metre operating height the Nimbus system is ideal for high rise incidents. If the door to the compartment is secure, the cutting lance is used to inject the fine mist. When in doubt an adjoining wall can provide access or, if really necessary, an attack can be made from the floor below. The portable unit can also be taken to bridgehead.



OPEN AND CAR FIRES

The general purpose lance is used for this type of fire and its efficiency is “dramatic” and “astounding”. The minimal water use preserves evidence on the scene where necessary and there is minimal or no water damage or contaminated run off.



30 litres of water

2 minutes of time

+ NIMBUS

THAT'S ALL IT TOOK TO
EXTINGUISH THIS FIRE

SEEING IS BELIEVING

Roof Using the Nimbus prop lance a fine water mist fills the roof void controlling or preventing the spread of the fire.

Thatch The roof void is cooled without water damage whilst the thatch itself is cut or penetrated by another NIMBUS unit. Conventional fire fighting cannot prevent extensive damage by fire and water.



Household, wood burners, chimney, sandwich panels, ducting, PPV, HAZMAT (removal of flammable atmosphere), etc.



Peat and deep seated

The general purpose lance will penetrate straw, thatch, paper, clothes banks, peat, etc., to a depth of 2 metres plus.



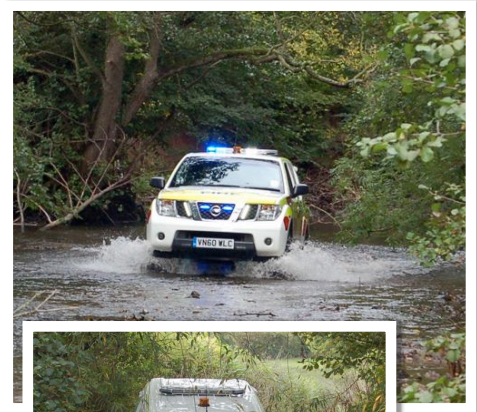
Hydrocarbon, Refineries and Aircraft



Time: 16:49:50 → 16:50:19
Just 29 seconds

Fogging or water mist has been used to great effect for decades. Now research has proven the efficacy of the fogging technique in any fire situation. Nimbus provides a uniquely versatile and portable method of introducing fogging into any fire situation

Item	Conventional Fire Truck	NIMBUS Fire	Observations
Pump	2,000 L per min	30 L per min	Nimbus is environmentally beneficial with little or no contaminated water run off.
High pressure hose reel	250 L per min @ 40 bar	30 L per min @ 300bar	
Tank run time (hose reel)	7.2 minutes	8 minutes	
Hydrant refill	Yes	Yes	Nimbus can lift from open water at a depth of 75mm.
Garden hose attachment	No	Yes	
Open water	Yes	Yes	
Water droplet	10 microns	1 micron	Nimbus water droplets hang in the air allowing latent heat of vapourisation.
Droplet remains in air	0.5 second	5.5 seconds	
Portable pumps	800 L per min @ 7 bar	30 L per min @ 300 bar	NIMBUS portable units also provide the same fire fighting capability as their fixed versions.
Weight	89kgs	98kgs	
Cutting lance	No	Yes	
High rise/thatch lance	No	Yes	



**30 litres per minute at 300 bar
 Pathfinder has 8 minutes supply - 10mw capability
 Tank refill facility (hydrant or garden hose)**

NIMBUS FIRE GOES WHERE NO CONVENTIONAL FIRE ENGINE HAS GONE BEFORE!!

NIMBUSfire

FILMS & INFORMATION:
www.nimbus2010.com

CONTACT:
 TEL: +44 (0)121 288 0776
 FAX: +44 (0)121 345 1106
 EMAIL: info@nimbus2010.com

PARK LODGE INTERNATIONAL LTD
 ROWLESTONE, HEREFORD
 HR2 0HE, UK

Richard Baker brings over 35 years of emergency service experience in operational, prevention and training. His expertise, enthusiasm and energy has raised the profile of safer fire fighting in the UK. His son, Paul, is responsible for the design and manufacture of the Nimbus Fire Fighting System.



PORTABLE OR FIXED

Depending on the desired use, Nimbus can be fixed via a PTO to a suitable vehicle, including 4x4, or as a wheeled portable unit. In the portable version it can easily be air lifted, carried by most vehicles, placed on a small boat or lifted to the deck of a larger vessel. Nimbus can go where it is needed.